



William Gilpin School

Newsletter

Spring Term - Number 3 - Friday 9th February 2024

HEADTEACHER UPDATE

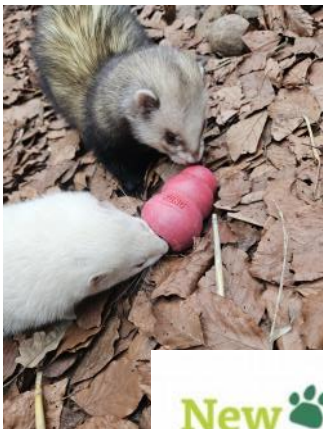
What a terrific week we've had in school to close the half-term! For me, walking around on Wednesday highlighted the variety of enrichment offered to our children, with Willow & Maple enjoying their weekly Active Me P.E. coaching, Beech & Pine cooking and testing their pancake recipes in D&T, Oak Class demonstrating their netball skills on the playground and our collaborative Forest School in full-swing (see page 2). With a group of lower-junior Dodgeball competitors also at Priestlands with Mrs Granger, it was quite an afternoon! Wishing everyone an enjoyable half-term week and we will see you again on Monday 19th.

Simon Croutear

Endangered Animal Day

Our eco-warriors recently organised a fundraising day to raise money for the New Forest Wildlife Park, inviting pupils to bring a soft toy animal into school. We bought a variety of items for the park, including foliage for the toads, a Kong filled with treats for the ferrets, a wooden playground for the harvest mice and rope for making enrichment toys for many different species, including wolves, lynx, otters and foxes.

We had a lovely thank you message from the park, who also sent these photos of the residents enjoying their treats!



New Forest wildlife park



Teacher pancake contest!

With Shrove Tuesday falling during half-term this year, we held our annual William Gilpin Teacher Pancake Contest during Celebration Worship today - and it didn't disappoint! Last year's champion Mrs Linsley returned to the hotplate to defend her crown, this year's competition was Miss Simkins. Both teachers did incredibly well, keeping cool heads despite a very excitable crowd chanting and cheering. Miss Simkin's impressed us with her pancake-flipping skills as she shaped hers as a heart and flavoured it with honey. Mrs Linsley went for the classic sugar & lemon, with pupils able to get a close look at both efforts under the hall visualiser, before Mr Croutear's taste-test. After a tense pupil-vote, Mrs Linsley triumphed again and was crowned the 2024 pancake champion!



Outstanding debts

As we approach the end of the financial year, can we please request that parents **settle any outstanding debts** with the school. With financial pressures on everyone, it is advisable to settle accounts weekly rather than building up large bills. Thank you for your support.



FOREST SCHOOL

We are pleased to announce the return of William Gilpin Forest School after half-term. As usual, Lou & Claudia from Wildwood Forest School will be with us for an afternoon every week, with 2024 Forest School taking place on a **Thursday**. The timetable is here – please ensure your children wear suitable Forest School clothes (including footwear) on their days.

The Forest School season did actually begin earlier this week for a small group of William Gilpin pupils, as we welcomed groups of other Year 3/4 children from local schools in a new collaborative enrichment programme. Brockenhurst, South Baddesley and Milford-on-Sea joined us for a fantastic afternoon of woodland crafts, a campfire, pond-dipping and wild-play - it was lovely to see the children interacting and learning with others. Each school is hosting a similar event later this year (including a Beach School afternoon with Milford) and many more William Gilpin pupils will get to benefit from this.

Many of our pupils have also been enjoying a special programme of Outdoor Learning at New Park, Brockenhurst over recent weeks. This has been run by the Youth Options group and has featured a variety of Forest School-style learning activities, with KS2 pupils taking part during the autumn term and a KS1 group this half-term. We are very grateful to the team from Youth Options for providing this opportunity, which the children have thoroughly enjoyed.

Date	12:30pm	1:45pm
HALF TERM		
22.02.24	Willow	Maple
29.02.24	Beech	Pine
07.03.24	Willow	Oak
14.03.24	Maple	Beech
21.03.24	Pine	Oak
EASTER HOLIDAY		
18.04.24	Willow	Maple
25.04.24	Beech	Pine
02.05.24	Willow	Oak
09.05.24	Maple	Beech
16.05.24	Pine	Oak
23.05.24	Beech	Maple
SPRING HALF TERM		
06.06.24	Willow	Pine
13.06.24	Oak	Maple
20.06.24	Willow	Beech
27.06.24	Pine	Oak
04.07.24	Maple	Beech





Flower arranging

St John's Church have asked us whether any parents (or grandparents or any other friends/relatives?) would like to help out with the flower arranging in the Church. You don't need to already be an amazing flower arranger, and there is no right or wrong! A couple of basic flower arranging lessons can be arranged before you start if you would like to be involved. If you are interested and could spare an hour or so to be on a rota, do contact the office and we will put you in touch.

Water bottles

Please can we encourage parents to provide water bottles for pupils with proper drinkable lids (rather than just screw top bottles) to avoid spillages in class. In addition, we are finding that branded water bottles (e.g. Prime) are causing quite a distraction, so if such labels could be removed if these are being brought to school, it would be greatly appreciated. Thank you for your understanding.

Grapes/tomatoes

A reminder to parents to please remember to chop grapes / tomatoes and similar food in half for packed lunches, to reduce the likelihood of choking.

Celebration

Headteacher's Awards this week went to:

Year R - Harry H

KS1 - Levana B

Beech - Biagio R

Pine - Lucy P

Oak - Niamh S & India R



Attendance Cup

Whole-school attendance last week was 90.4% and the cup was shared between Willow & Maple class who achieved 94.7%.

House Points

Ipley House regained the trophy this week, to move into second place for the year with four victories.

Diary Dates

Monday 12th - Friday 16th February	HALF-TERM
Monday 26th February - Friday 1st March	KS2 Assessment Week
Sunday 3rd March	FROWGS Spring Crafternoon
Monday 4th - Friday 8th March	KS1 Assessment Week
Friday 8th March	WORLD BOOK DAY
Monday 18th & Tuesday 19th March	PARENTS EVENINGS (3.30 - 6.30)
Wednesday 27th March	Easter Service at St. John's (9.05)
Thursday 28th March	INSET Day
Friday 29th March - Friday 12th April	EASTER HOLIDAYS
Wednesday 17th & Thursday 18th April	Year 6 Bikeability
Friday 19th April	FROWGS Quiz Night
Monday 6th May	BANK HOLIDAY
Monday 13th - Friday 17th May	Year 6 SATs Week
Monday 20th - Friday 24th May	ARTS WEEK
Monday 27th - Friday 31st May	HALF-TERM
Tuesday 4th June	William Gilpin 300th Anniversary celebration day
Saturday 15th June	FROWGS Summer Fete
Thursday 20th June	Year 6 Winchester Cathedral visit
Tuesday 9th July	Year 6 Priestlands Intake Day
Friday 19th July	Church Service (1.30pm) Final day of term
Monday 22nd & Tuesday 23rd July	INSET Days

PositivePath Foundation
 Support, Friendship, Socialising and Employment Opportunities for Individuals Age 16+ with High Functioning ASD or Physical Challenges.
 Additional Services: • Therapy - Individual or Family • Mentoring - age 12+ • Sibling Support - age 12+ • Play Therapy - age 3+ • Time Out - age 12+
www.positivepathfoundation.org